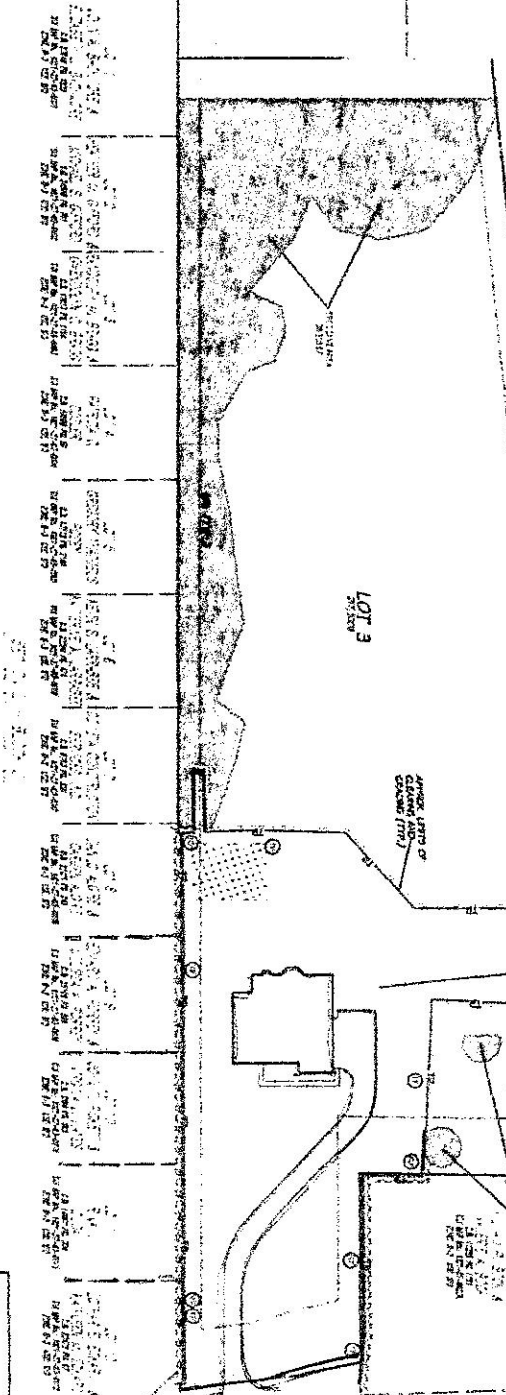


- LEGEND**
- EXISTING TREE
 - TREE TO BE REMOVED
 - UTILITIES
 - PROPOSED STRUCTURE
 - PROPOSED DRIVEWAY
 - PROPOSED PARKING

CHANGERS
CORNER
 OF ROUTE 44



LEGEND: DIMENSIONS ARE IN FEET AND INCHES. DIMENSIONS IN PARENTHESES ARE IN FEET AND INCHES. DIMENSIONS IN BRACKETS ARE IN FEET AND INCHES. DIMENSIONS IN SQUARE BRACKETS ARE IN FEET AND INCHES. DIMENSIONS IN CIRCLES ARE IN FEET AND INCHES. DIMENSIONS IN TRIANGLES ARE IN FEET AND INCHES. DIMENSIONS IN DIAMONDS ARE IN FEET AND INCHES. DIMENSIONS IN STARS ARE IN FEET AND INCHES. DIMENSIONS IN HEARTS ARE IN FEET AND INCHES. DIMENSIONS IN SPINDLES ARE IN FEET AND INCHES. DIMENSIONS IN HOURGLASSES ARE IN FEET AND INCHES. DIMENSIONS IN CROSSES ARE IN FEET AND INCHES. DIMENSIONS IN SQUARES ARE IN FEET AND INCHES. DIMENSIONS IN CIRCLES WITH A DOT ARE IN FEET AND INCHES. DIMENSIONS IN TRIANGLES WITH A DOT ARE IN FEET AND INCHES. DIMENSIONS IN DIAMONDS WITH A DOT ARE IN FEET AND INCHES. DIMENSIONS IN STARS WITH A DOT ARE IN FEET AND INCHES. DIMENSIONS IN HEARTS WITH A DOT ARE IN FEET AND INCHES. DIMENSIONS IN SPINDLES WITH A DOT ARE IN FEET AND INCHES. DIMENSIONS IN CROSSES WITH A DOT ARE IN FEET AND INCHES. DIMENSIONS IN SQUARES WITH A DOT ARE IN FEET AND INCHES. DIMENSIONS IN CIRCLES WITH A DOT AND A LINE ARE IN FEET AND INCHES. DIMENSIONS IN TRIANGLES WITH A DOT AND A LINE ARE IN FEET AND INCHES. DIMENSIONS IN DIAMONDS WITH A DOT AND A LINE ARE IN FEET AND INCHES. DIMENSIONS IN STARS WITH A DOT AND A LINE ARE IN FEET AND INCHES. DIMENSIONS IN HEARTS WITH A DOT AND A LINE ARE IN FEET AND INCHES. DIMENSIONS IN SPINDLES WITH A DOT AND A LINE ARE IN FEET AND INCHES. DIMENSIONS IN CROSSES WITH A DOT AND A LINE ARE IN FEET AND INCHES. DIMENSIONS IN SQUARES WITH A DOT AND A LINE ARE IN FEET AND INCHES. DIMENSIONS IN CIRCLES WITH A DOT AND A LINE AND A CURVE ARE IN FEET AND INCHES. DIMENSIONS IN TRIANGLES WITH A DOT AND A LINE AND A CURVE ARE IN FEET AND INCHES. DIMENSIONS IN DIAMONDS WITH A DOT AND A LINE AND A CURVE ARE IN FEET AND INCHES. DIMENSIONS IN STARS WITH A DOT AND A LINE AND A CURVE ARE IN FEET AND INCHES. DIMENSIONS IN HEARTS WITH A DOT AND A LINE AND A CURVE ARE IN FEET AND INCHES. DIMENSIONS IN SPINDLES WITH A DOT AND A LINE AND A CURVE ARE IN FEET AND INCHES. DIMENSIONS IN CROSSES WITH A DOT AND A LINE AND A CURVE ARE IN FEET AND INCHES. DIMENSIONS IN SQUARES WITH A DOT AND A LINE AND A CURVE ARE IN FEET AND INCHES.



DATE: 10/12/10
 PROJECT: BOCK FARM RESIDUE
 SHEET: 1 OF 1

BOCK FARM RESIDUE

TREE CONSERVATION PLAN



DESIGNED BY: DAVID M. SMITH
 ENGINEER: DAVID M. SMITH
 REGISTERED PROFESSIONAL ENGINEER
 STATE OF MARYLAND, NO. 001010

STATE OF MARYLAND
 PROFESSIONAL ENGINEER

DATE: 10/12/10
 PROJECT: BOCK FARM RESIDUE
 SHEET: 1 OF 1